

# Corporate Software Solutions

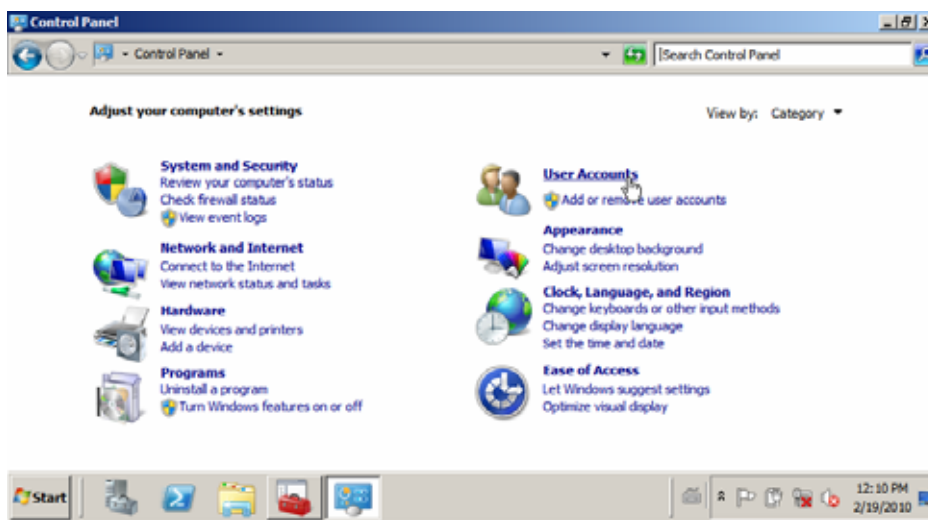
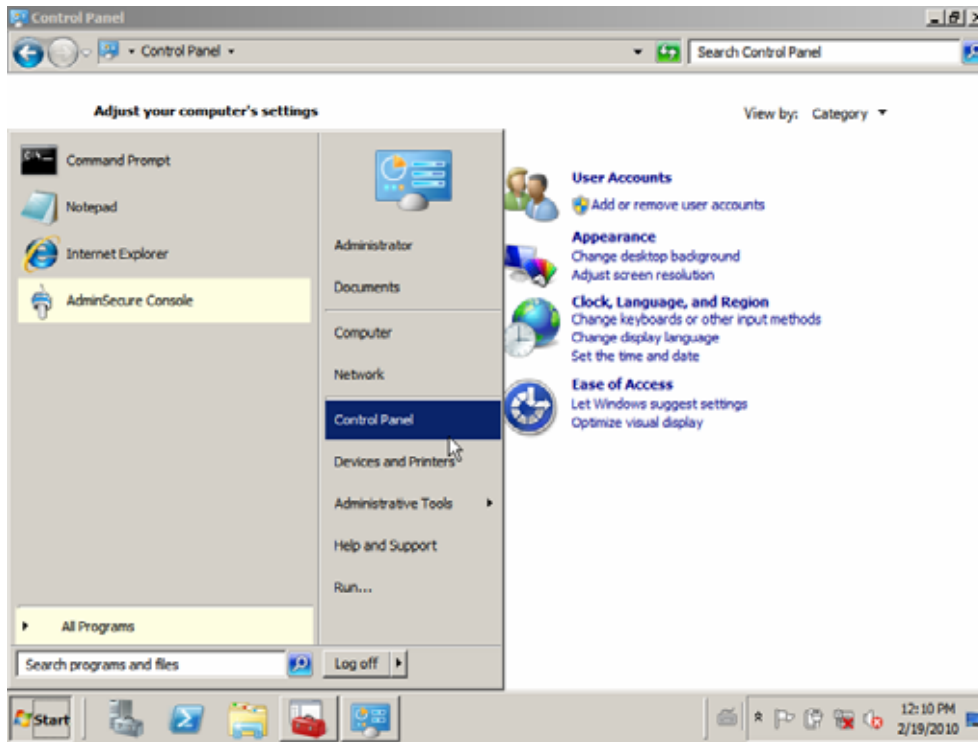


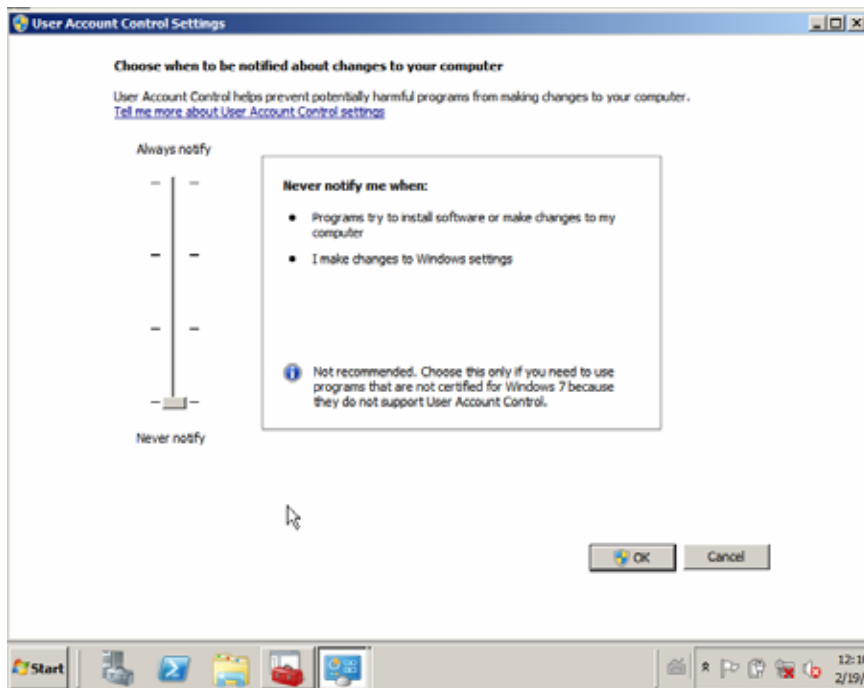
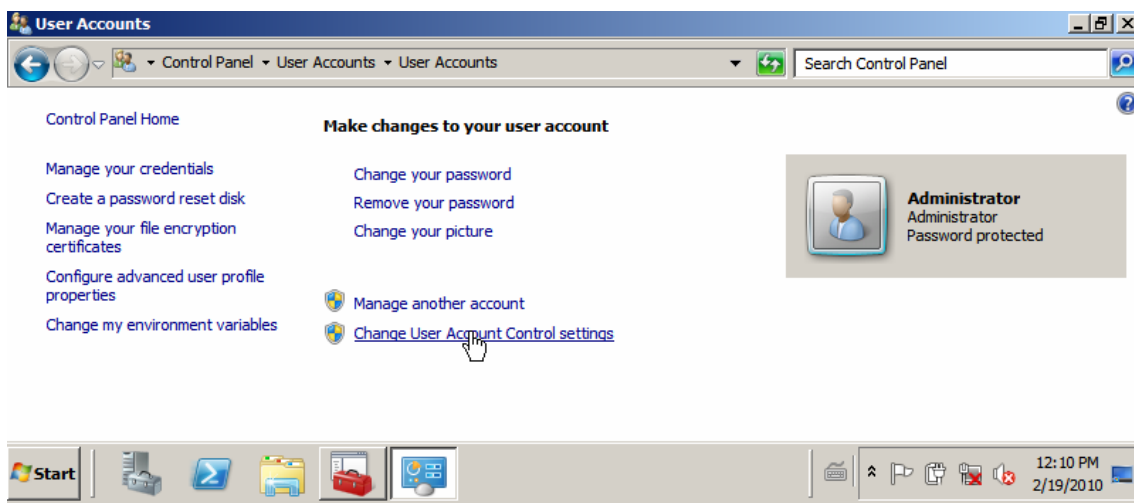
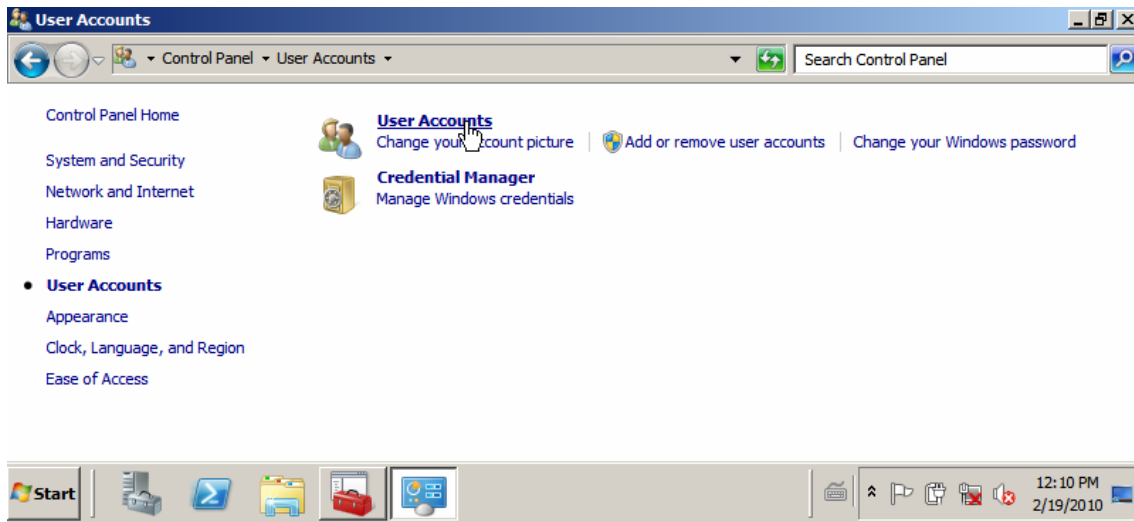
## How to install Panda AdminSecure on Windows Server 2008

The aim of this document is to show you graphically how to run the Panda AdminSecure installation (4.05 version or later) on a Windows Server 2008.

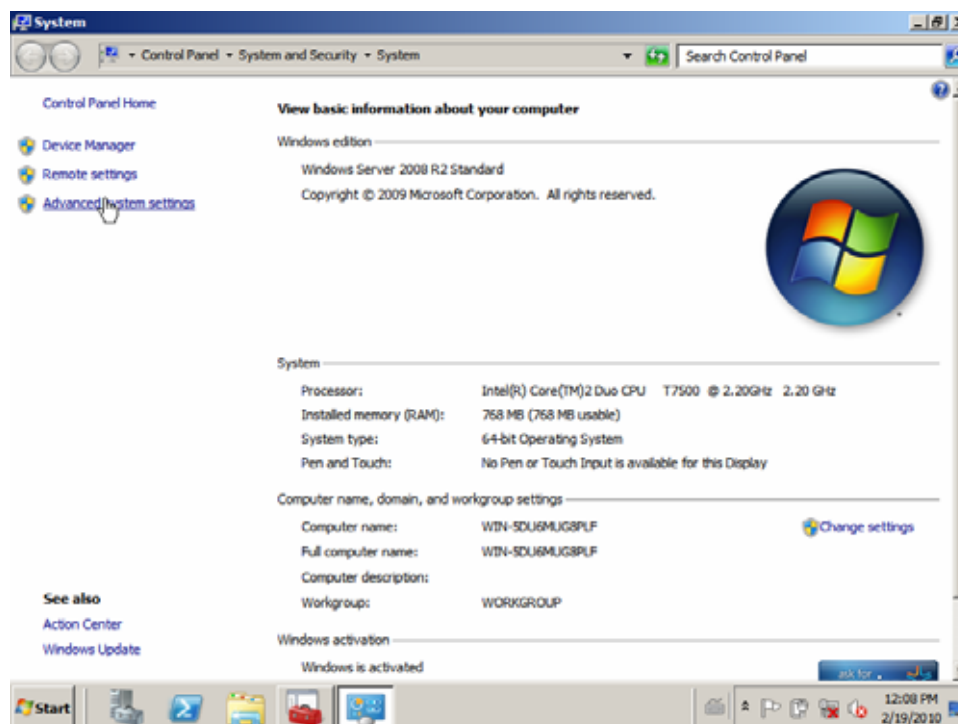
### Steps prior to installing Panda AdminSecure

1. Disable the **User Account Control (UAC)**. To do this, open Windows **Control Panel** and select **User Accounts**. Do not reboot the server at this moment.

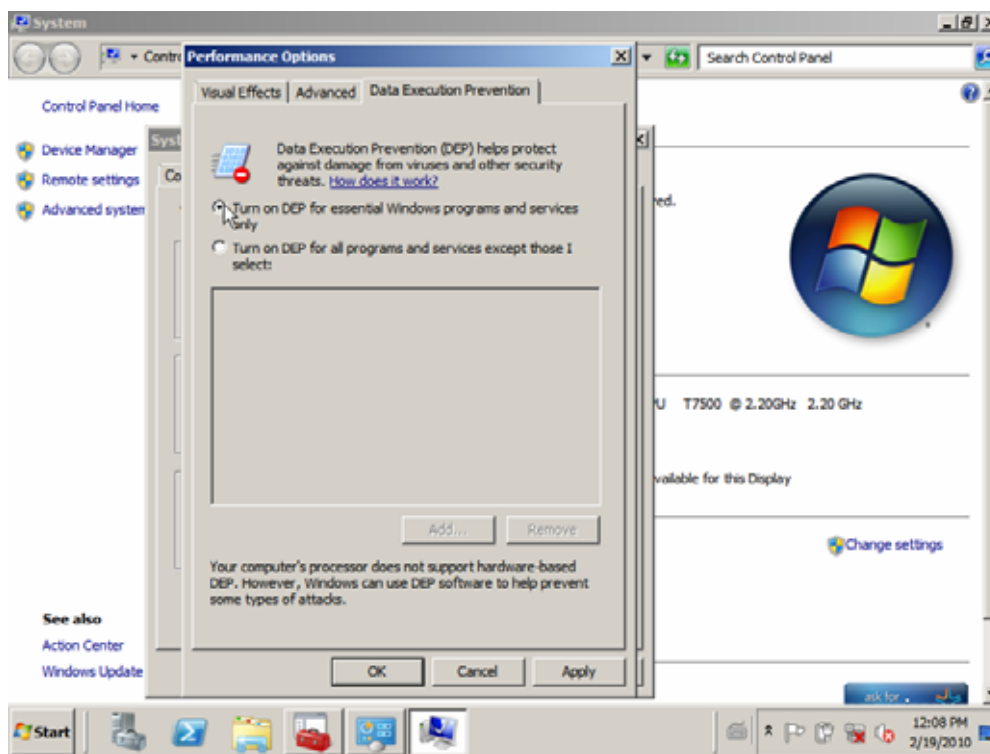
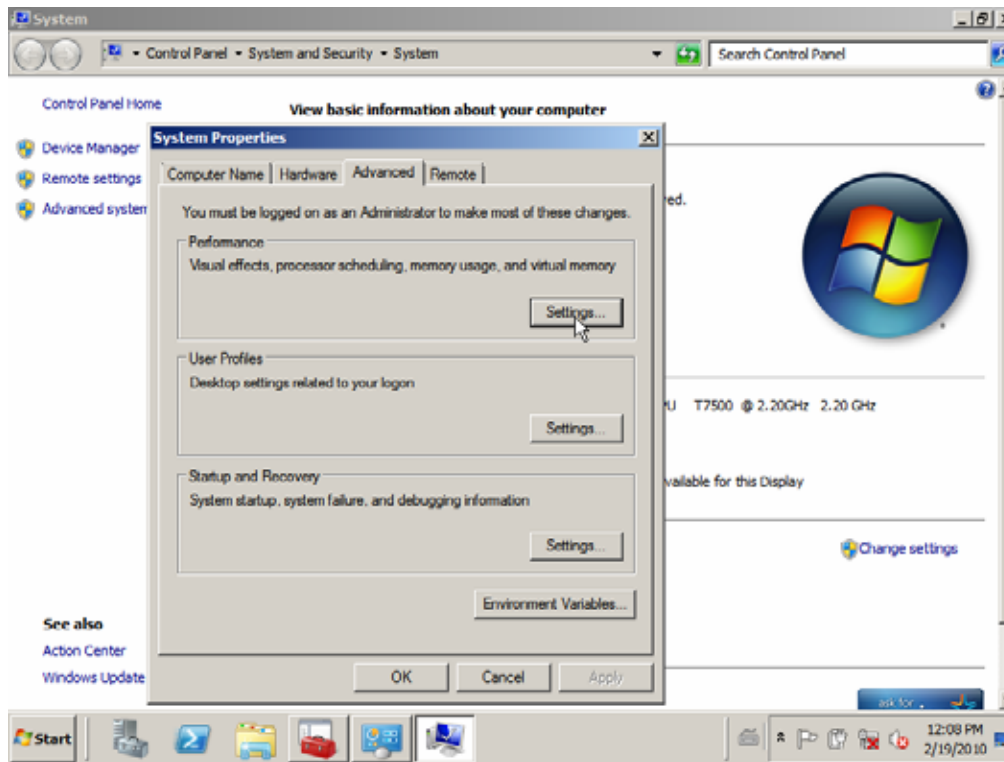




The screenshot shows the Windows XP Services console. The 'Services (Local)' window is open, displaying a list of services. A right-click context menu is open over the 'Computer' service, showing options like 'Open', 'Manage', 'Map network drive...', 'Disconnect network drive...', 'Show on Desktop', 'Rename', and 'Properties'. The 'Properties' option is highlighted. The taskbar at the bottom shows the Start button, several application icons, and the system clock displaying 12:07 PM on 2/19/2010.







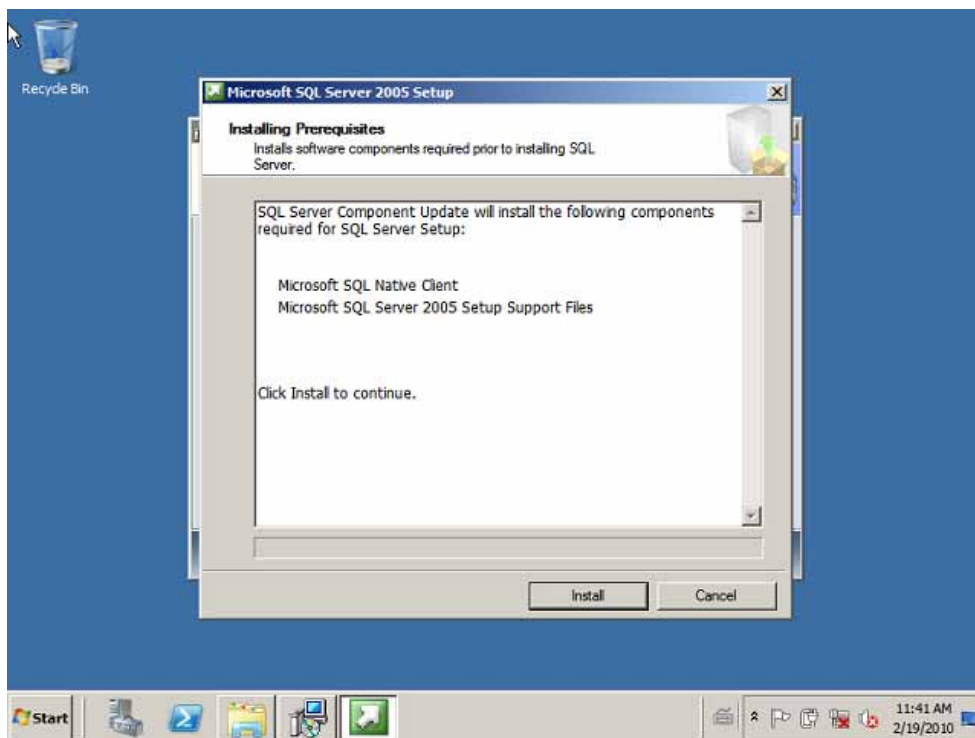
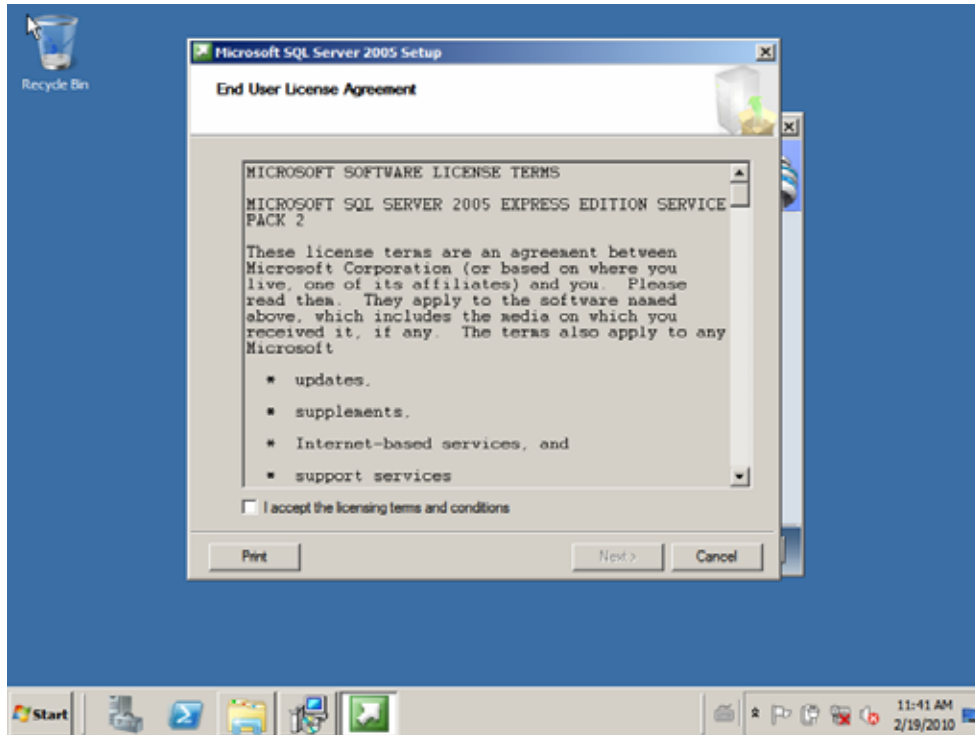
### 3. Install SQL Express 2005.

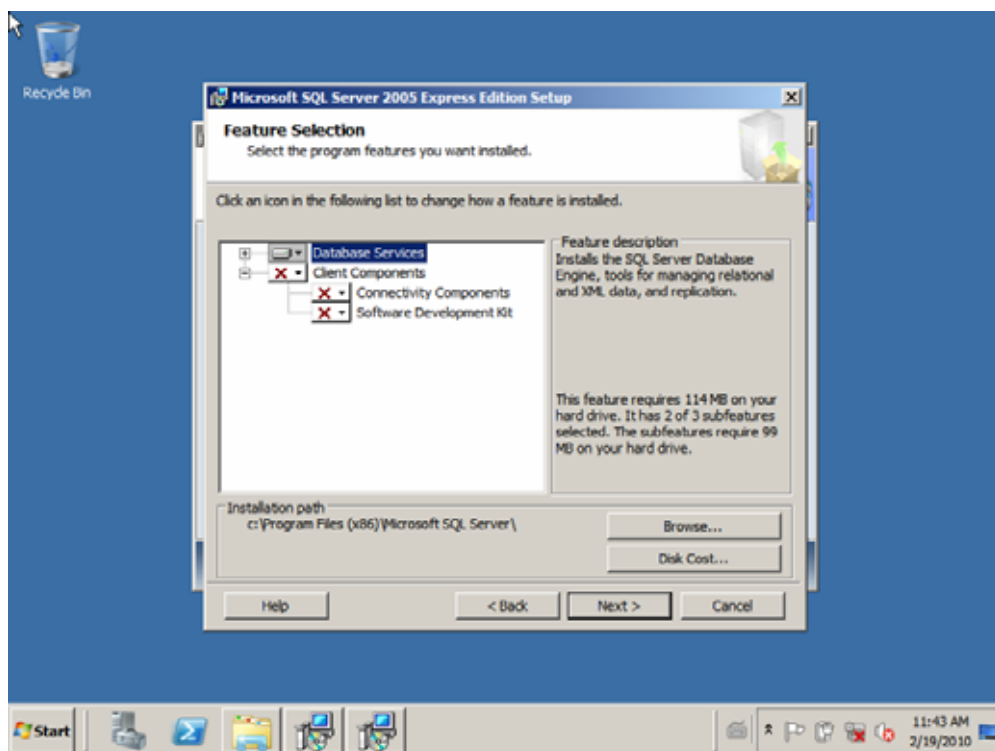
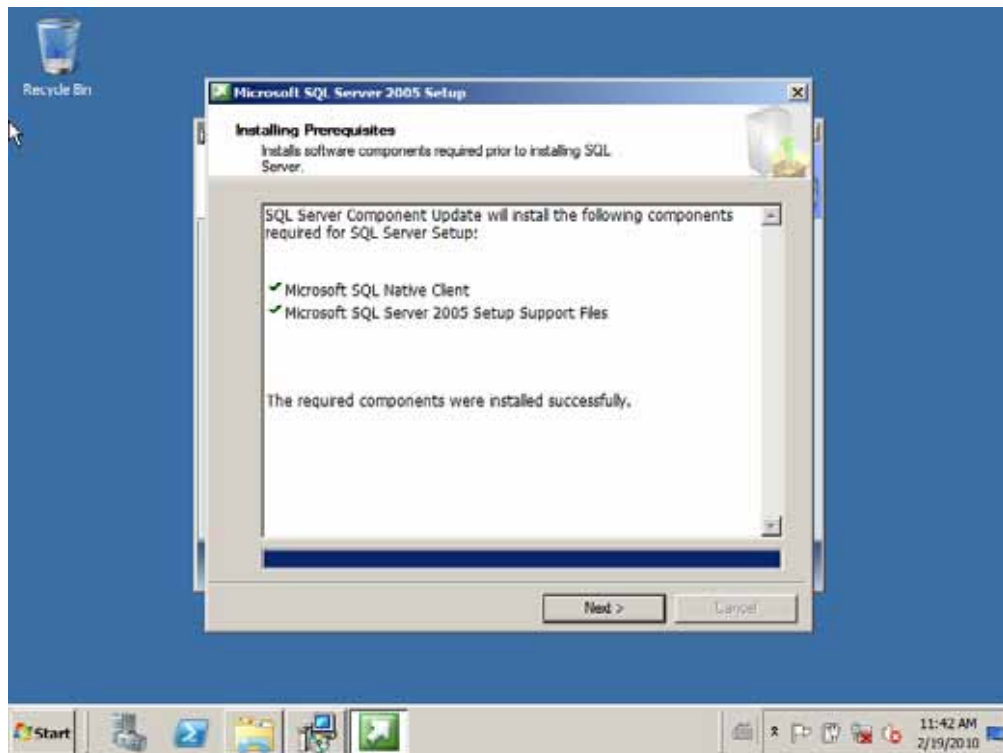
You can download it from the [Microsoft website](#).

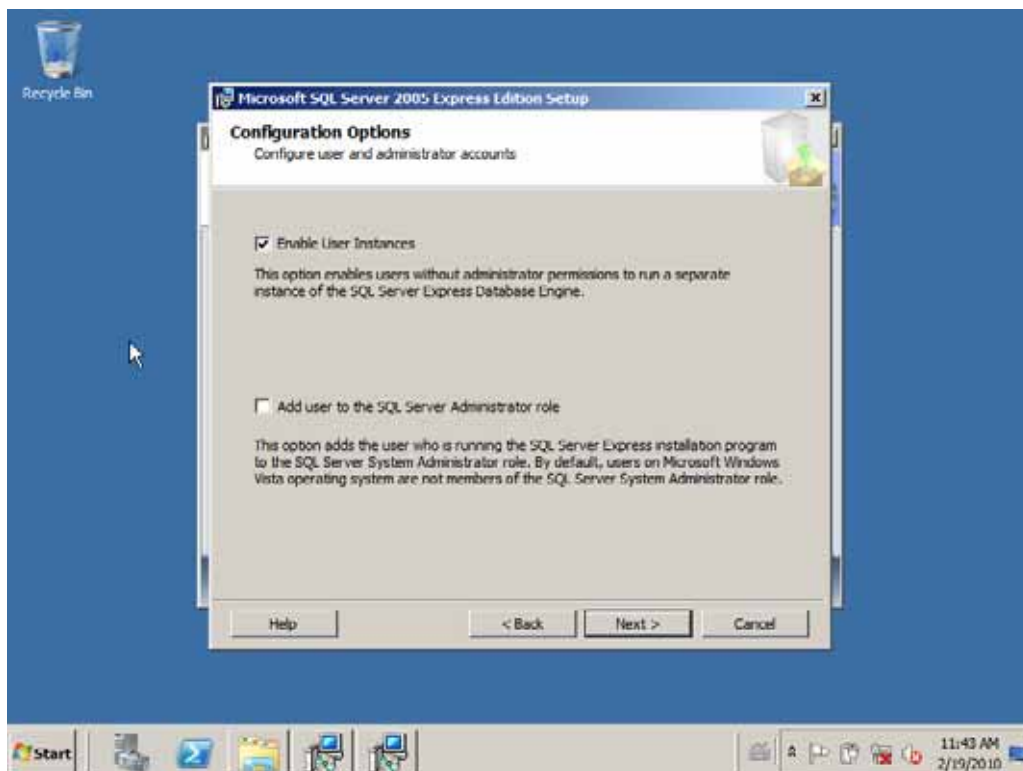
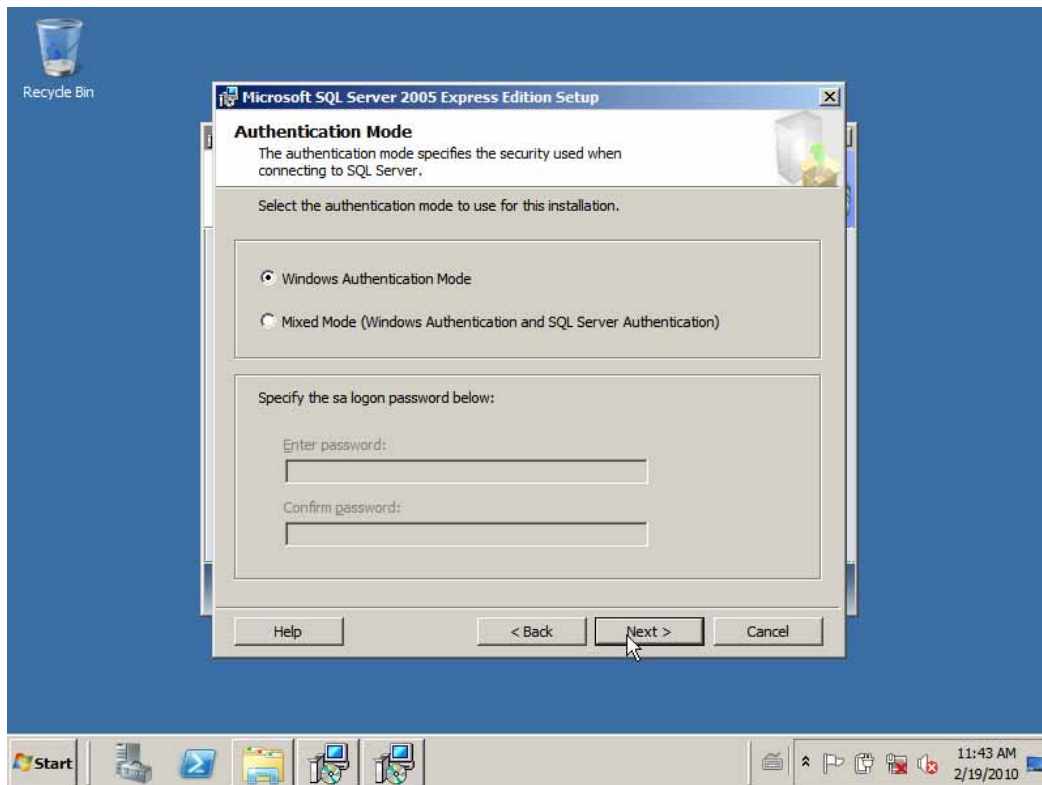
Additionally, in some cases it is also necessary to install [.NET Framework 2.0](#).

**Note:** In order to install SQL Express 2008, firstly check the [AdminSecure installation requirements FAQ](#).

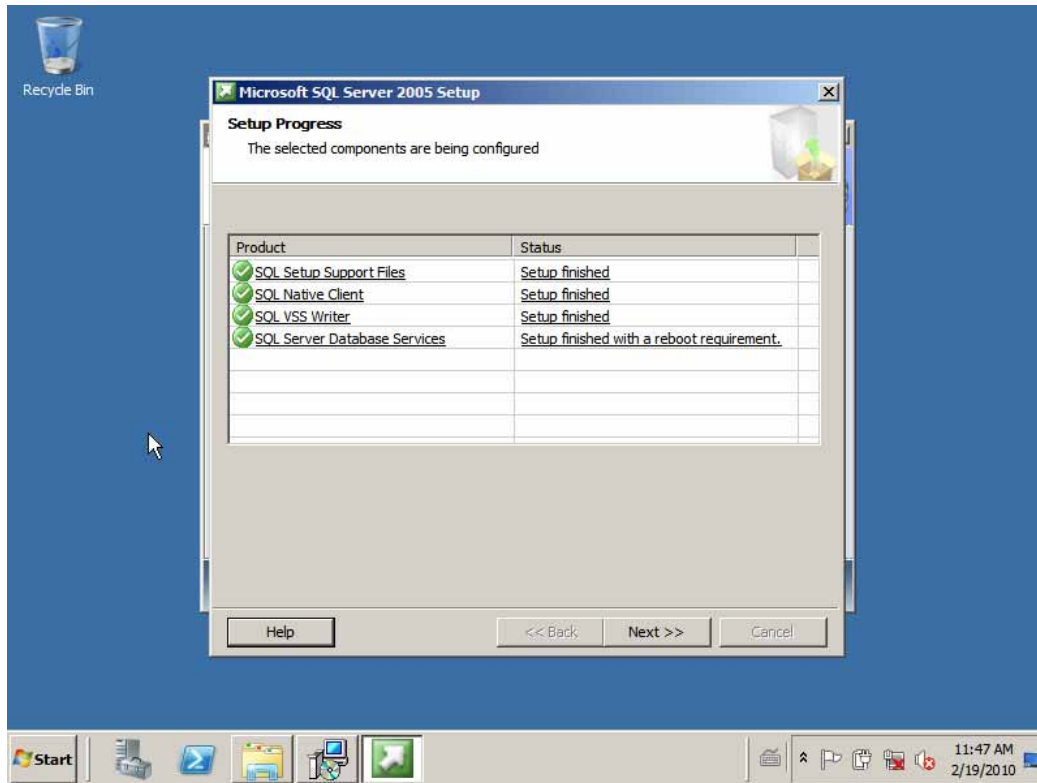
4. Follow the installation wizard as displayed in the screenshots:





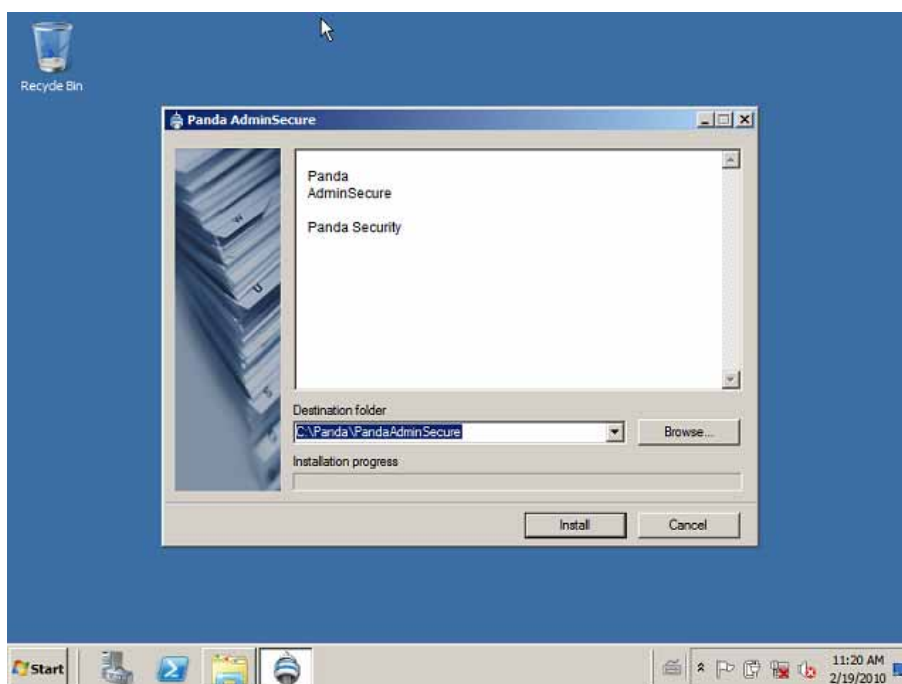


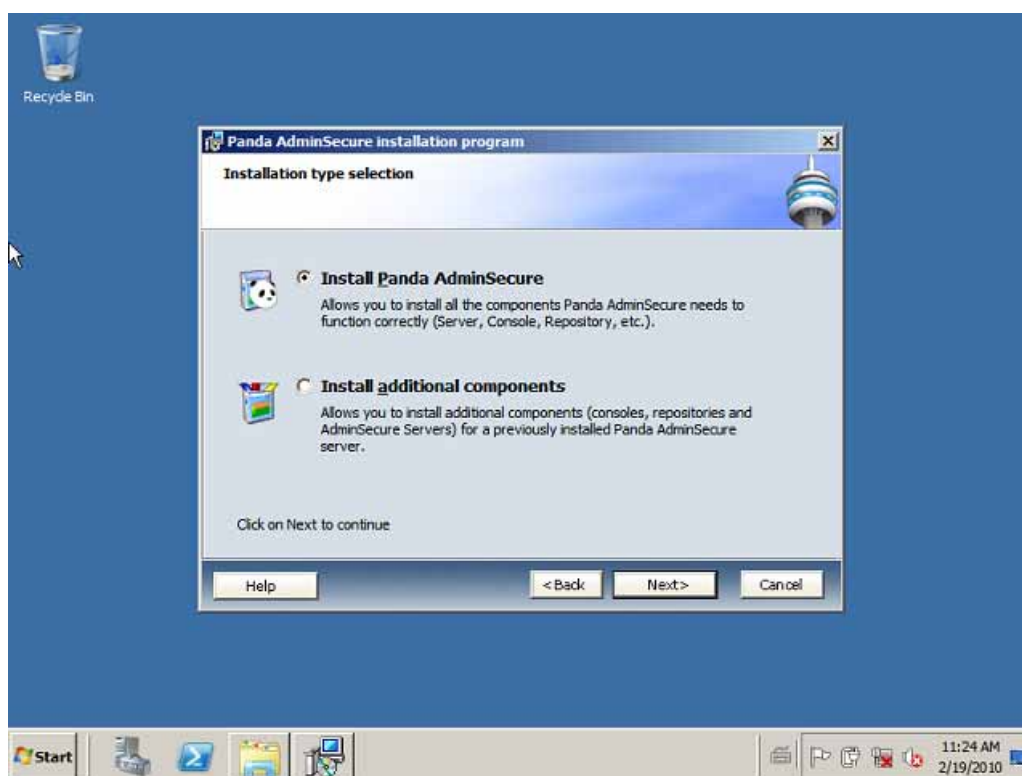
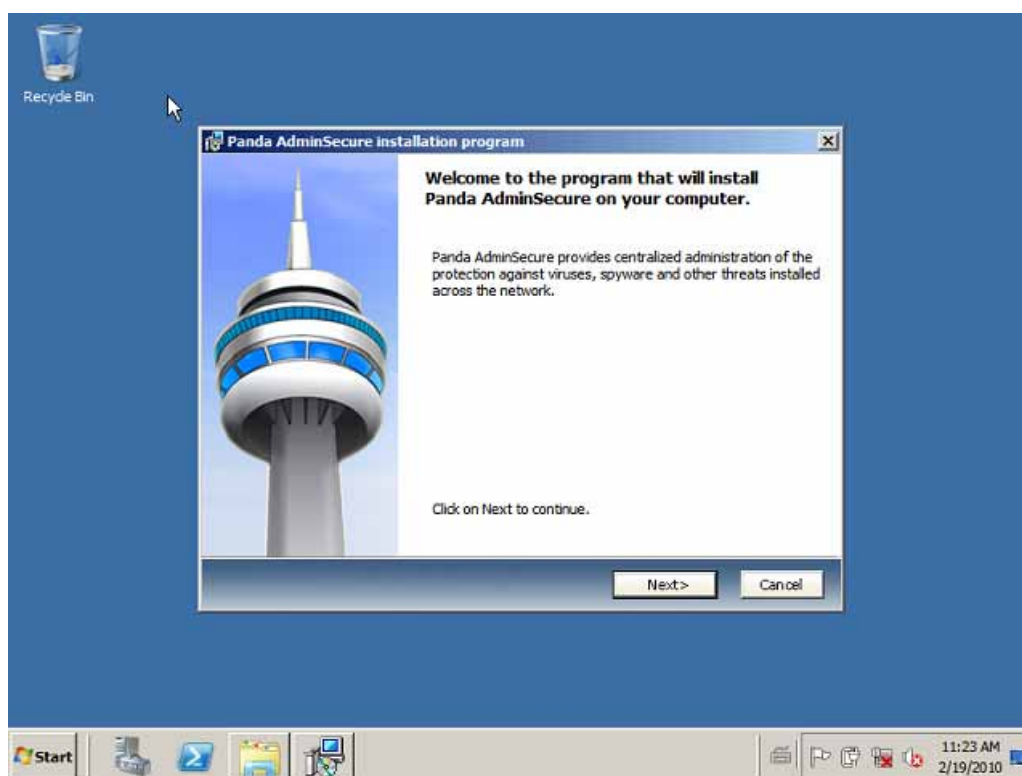




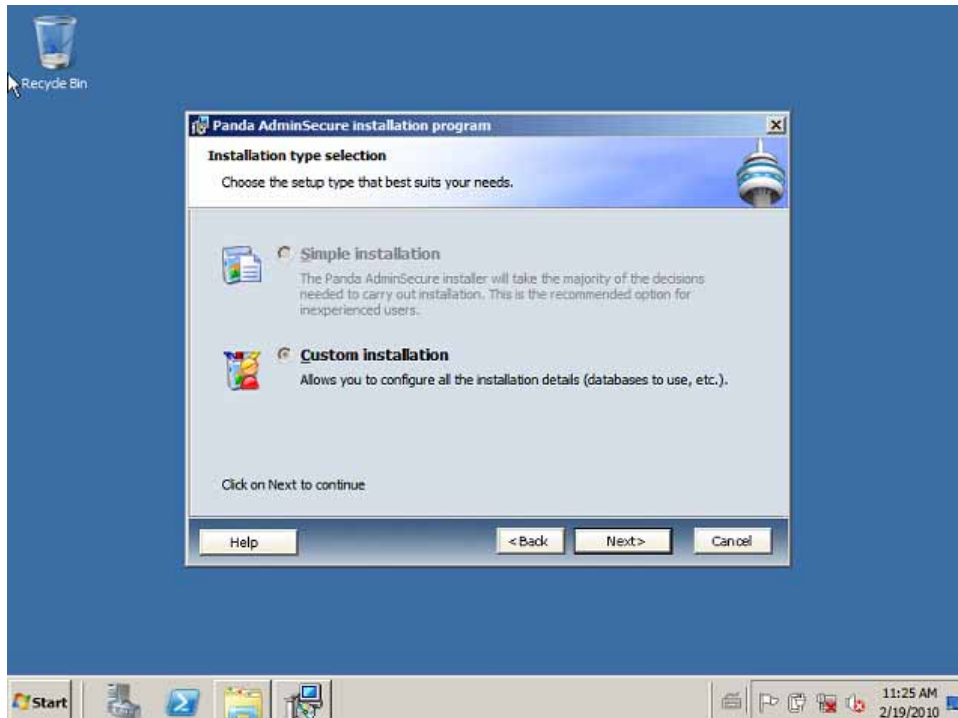
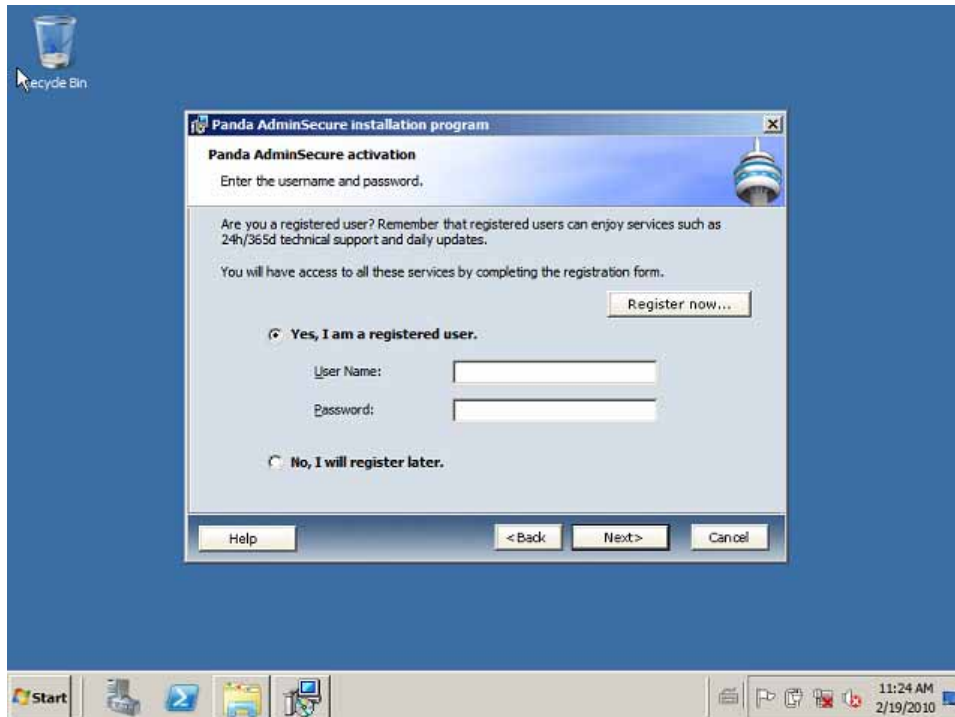
## Steps to install Panda AdminSecure

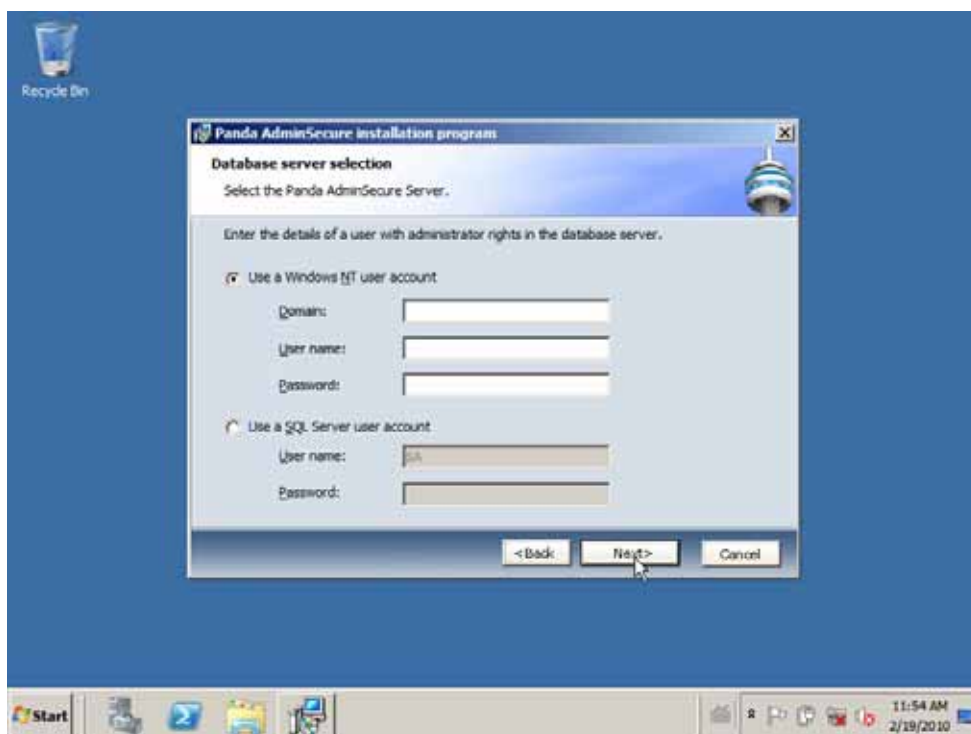
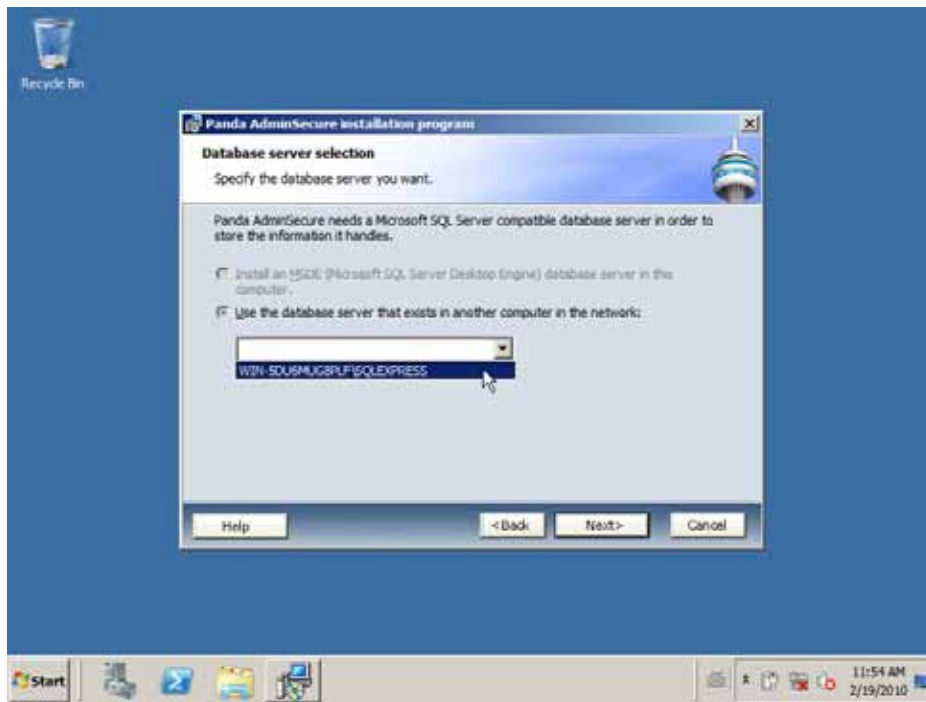
1. Run the Panda AdminSecure installation file. The wizard will extract the installation files to the specified folder.
2. Continue with the installation, and you will see that a standard installation is not possible.
3. Follow the custom installation wizard by selecting the previously installed SQL Express database. It is advisable to disable the use of the **User Profiles**.



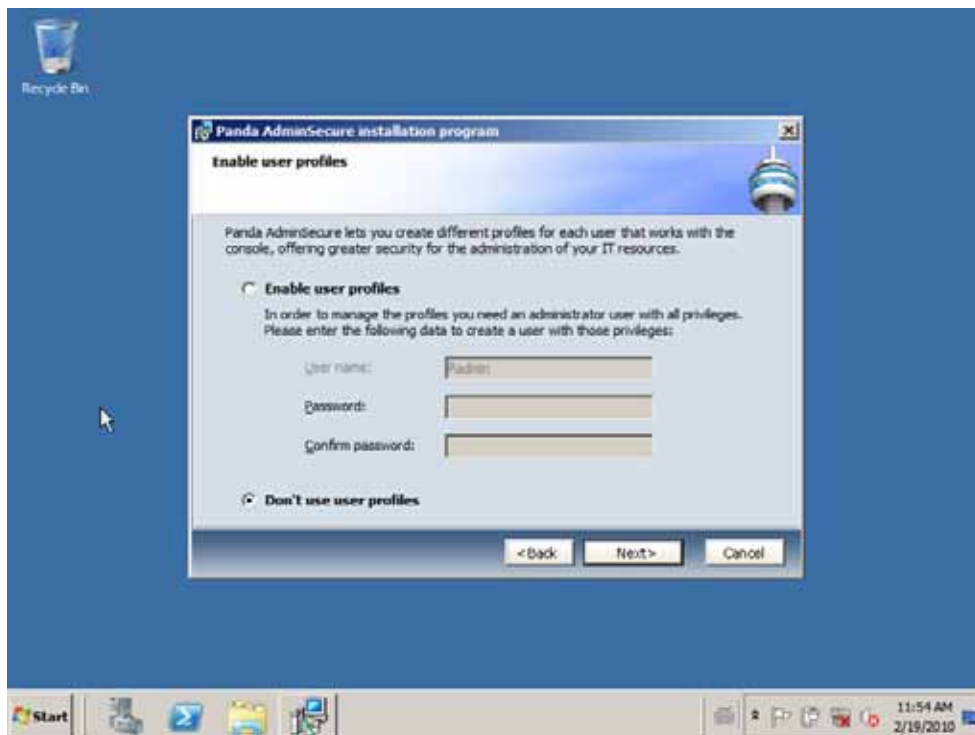


## 4. Enter your credentials correctly.

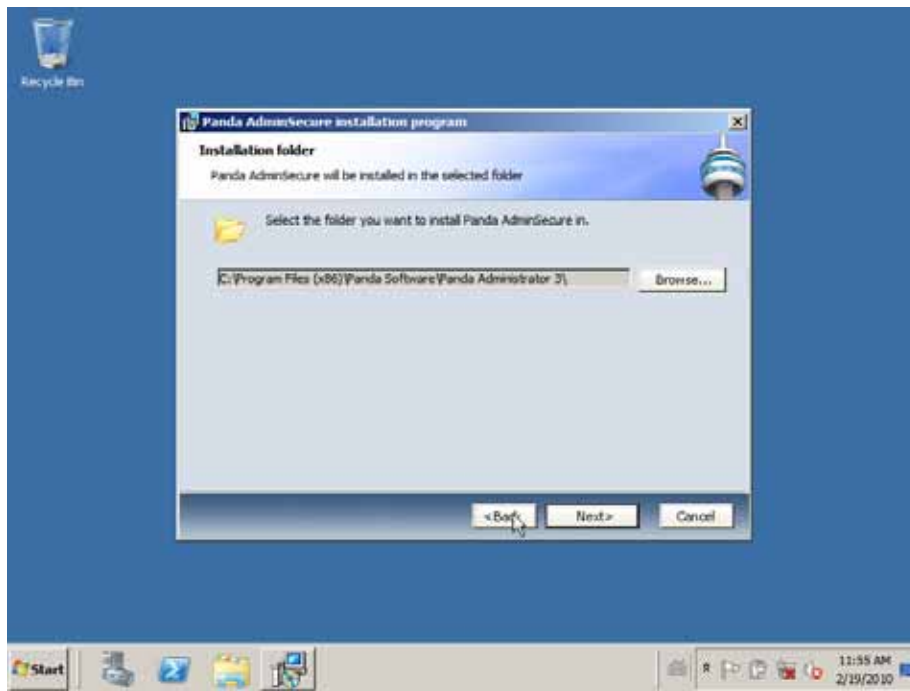




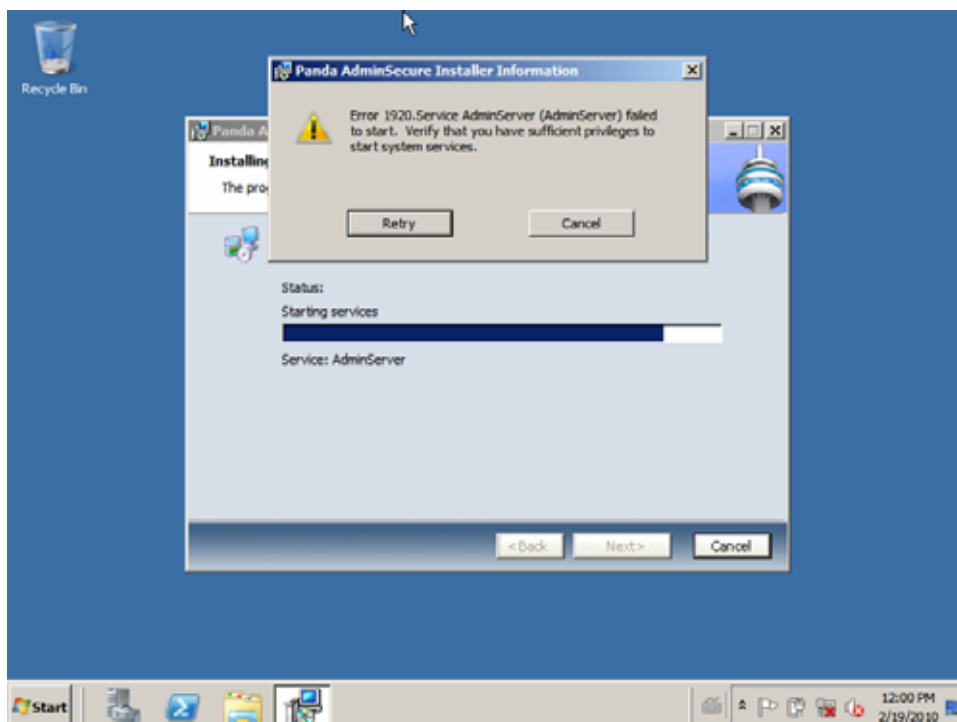
5. Disable user profiles by selecting the option **Don't use user profiles**.

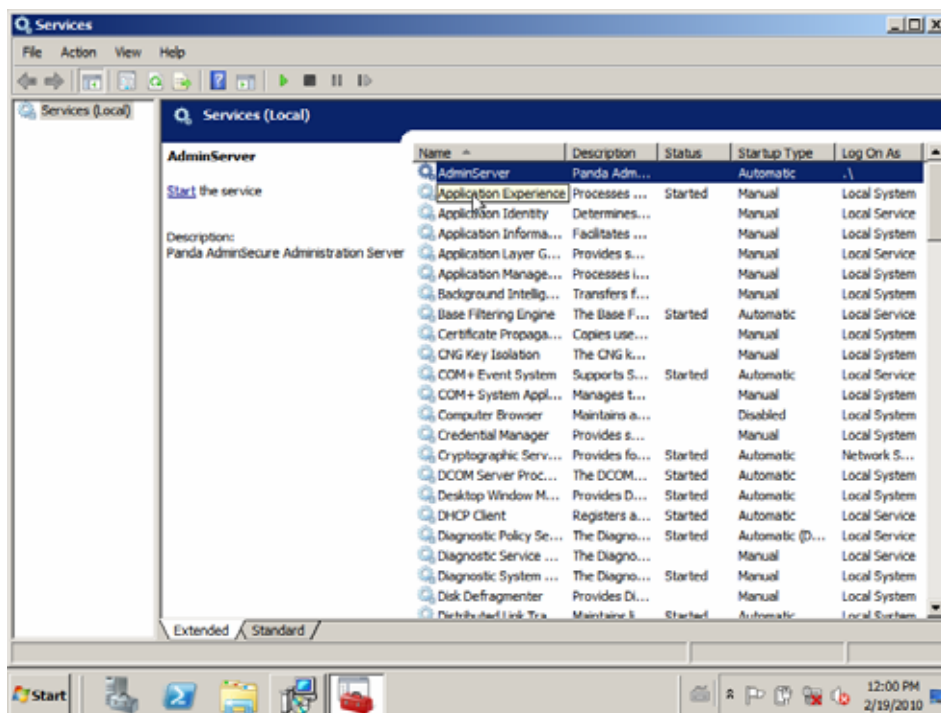
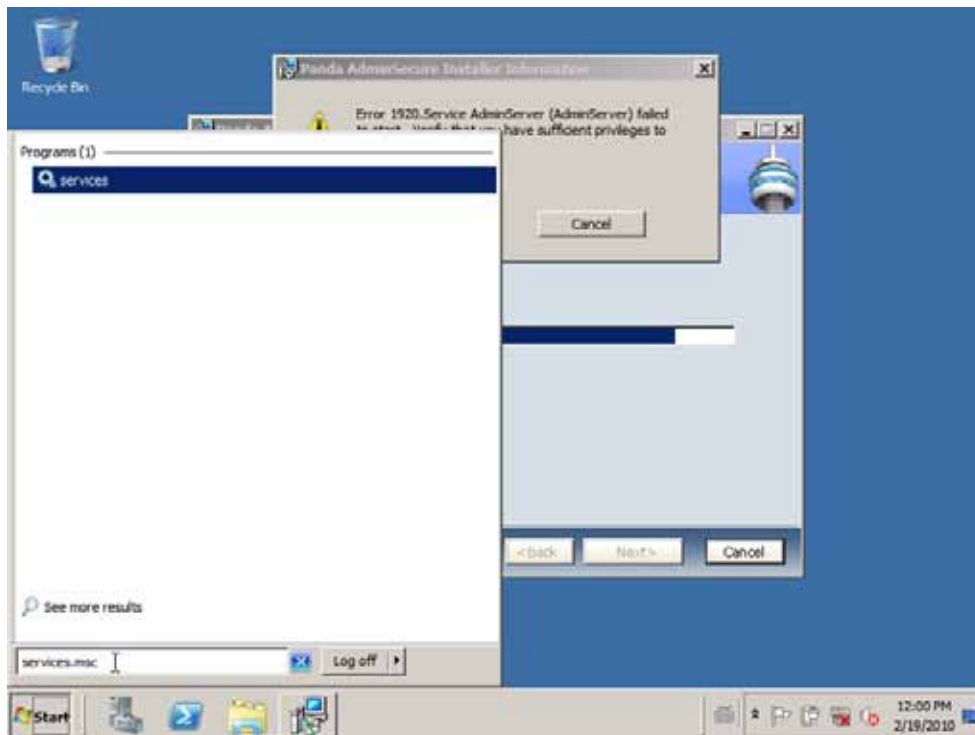


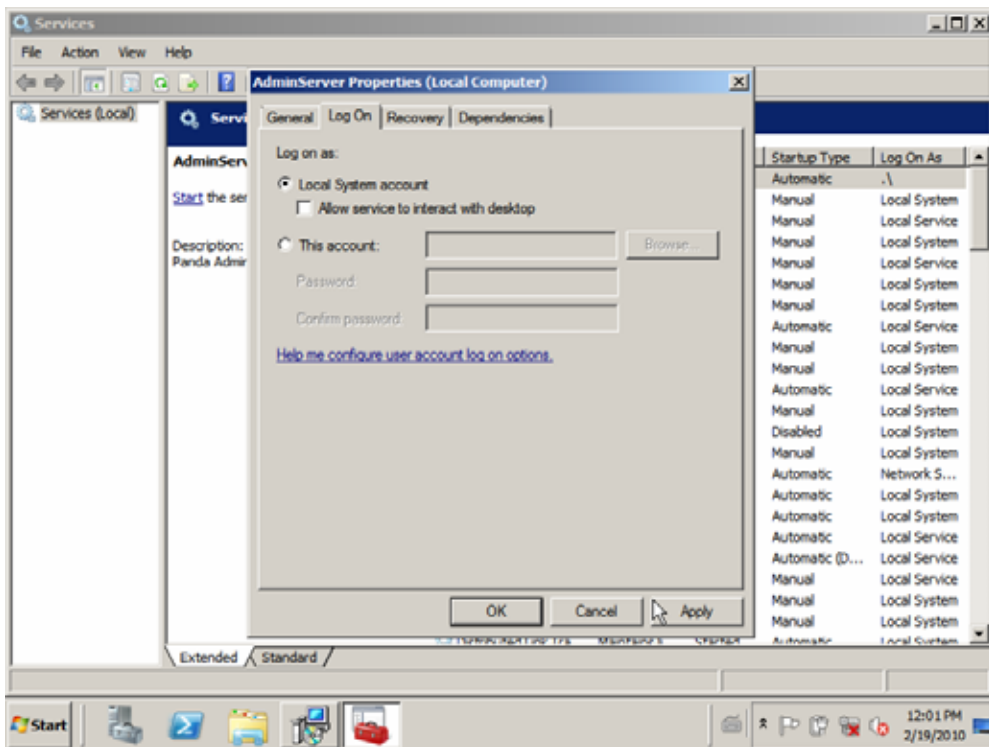
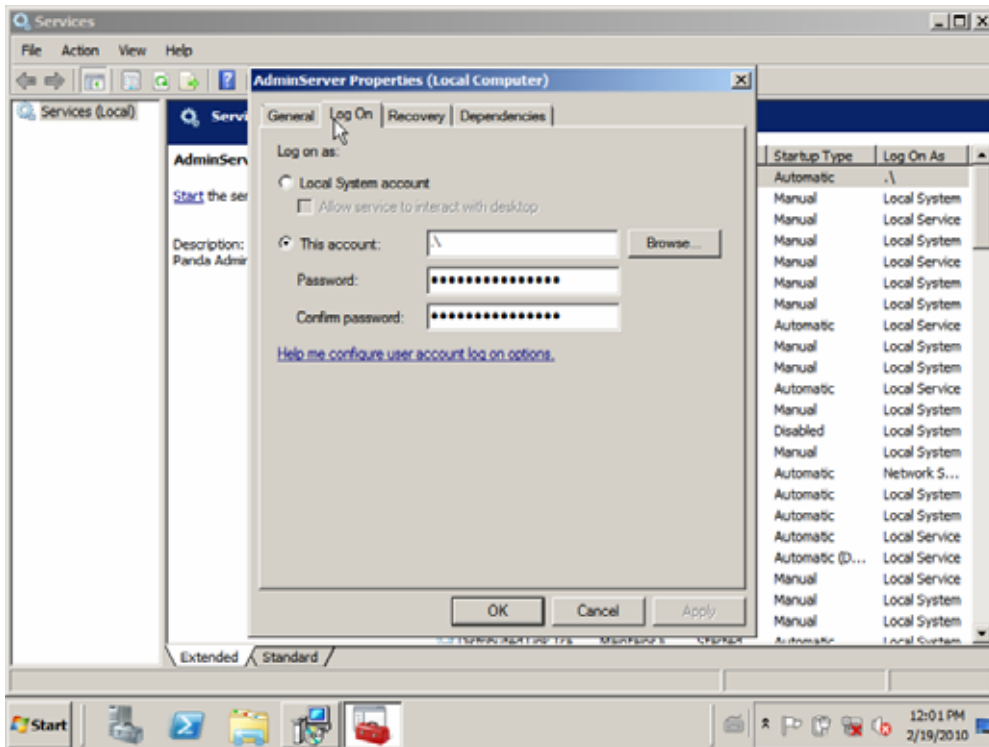




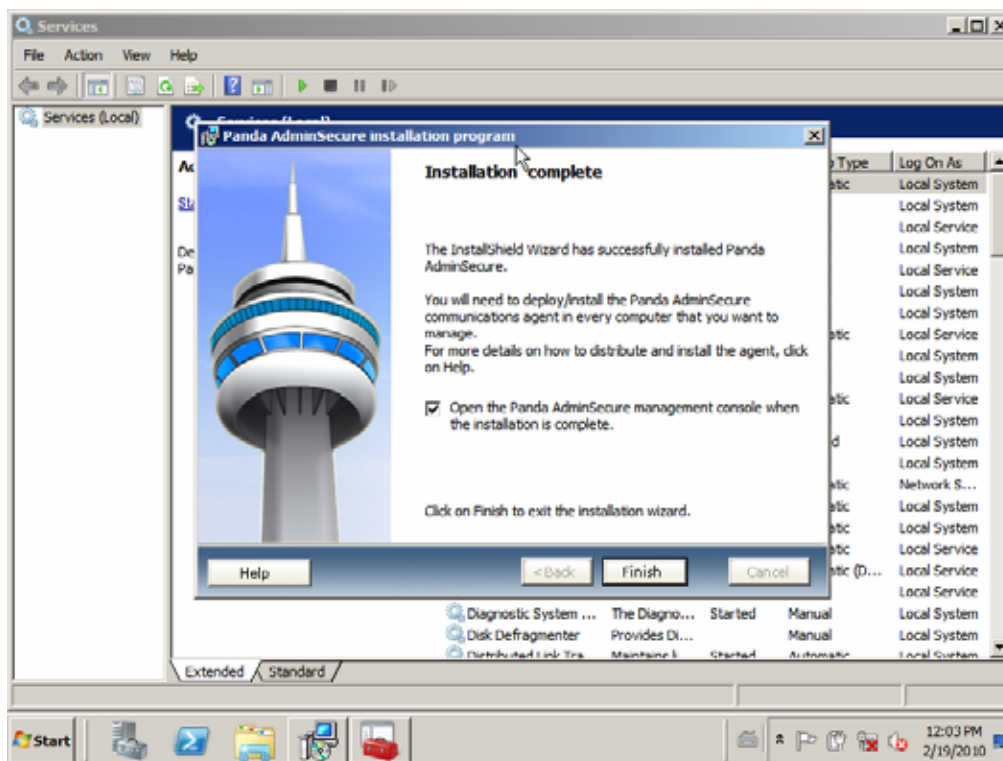
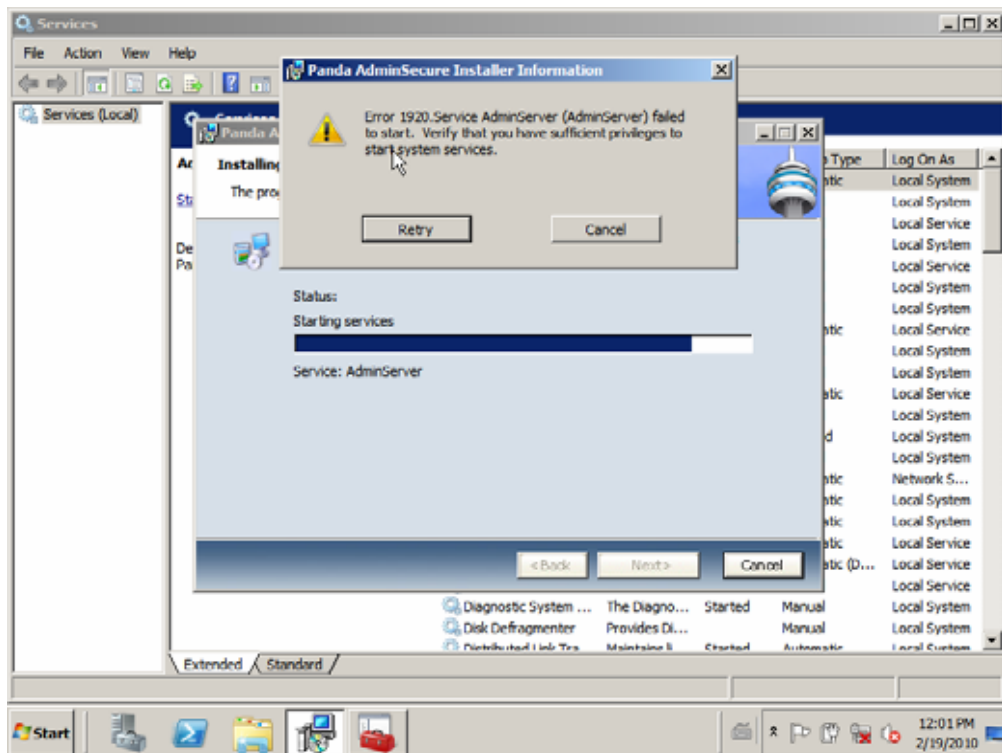
6. In some cases, an error message is displayed indicating that the AdminServer service cannot be launched. To fix this issue, change the **Log On** user of the AdminServer service to the **Local System account**.







7. Click **Retry** to start the service.



8. Now that AdminSecure is installed, open the administration console and distribute the communications agent and the antivirus protection to the different computers across your network.

#### Related articles

- [What are the installation requirements for Panda AdminSecure?](#)
- [What is AdminSecure Communications Agent and how is it distributed?](#)
- [How can I update the protection of my network once I have upgraded AdminSecure?](#)

Find more updated information in [Panda Security Support website](#) and [Panda Security Forum](#)